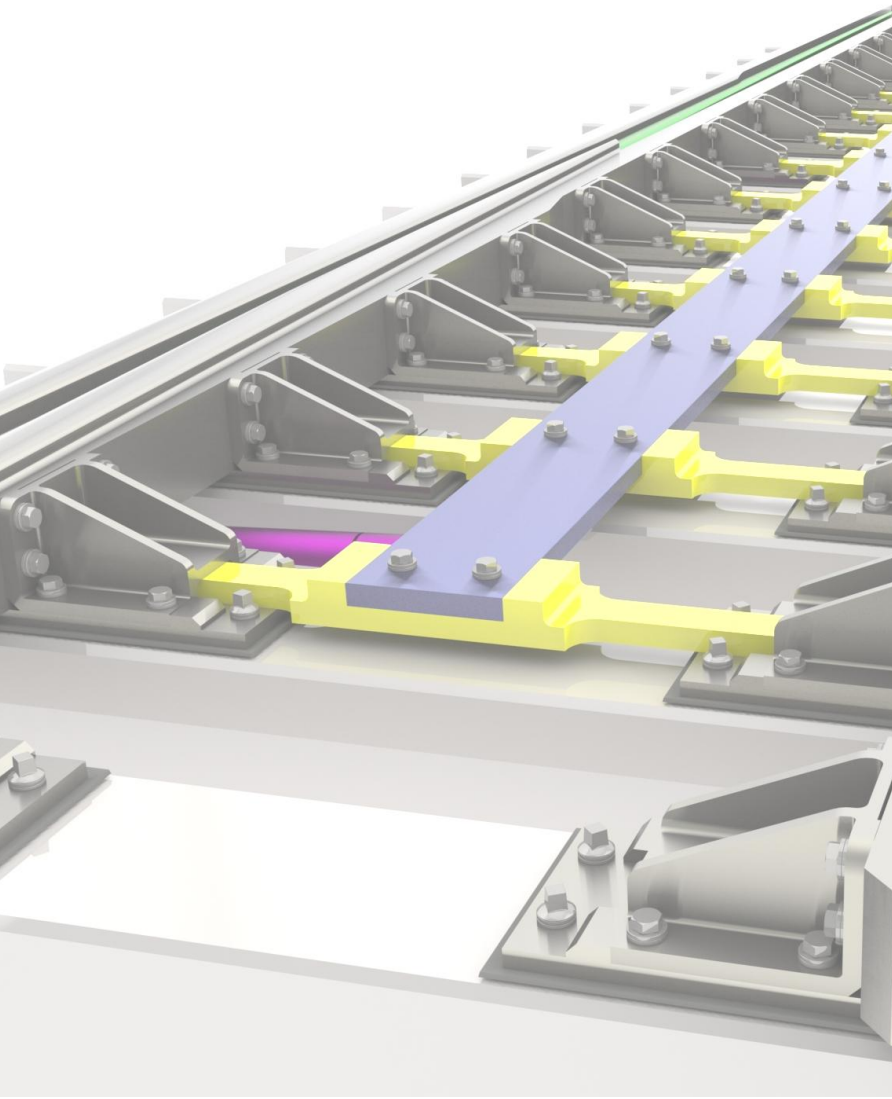
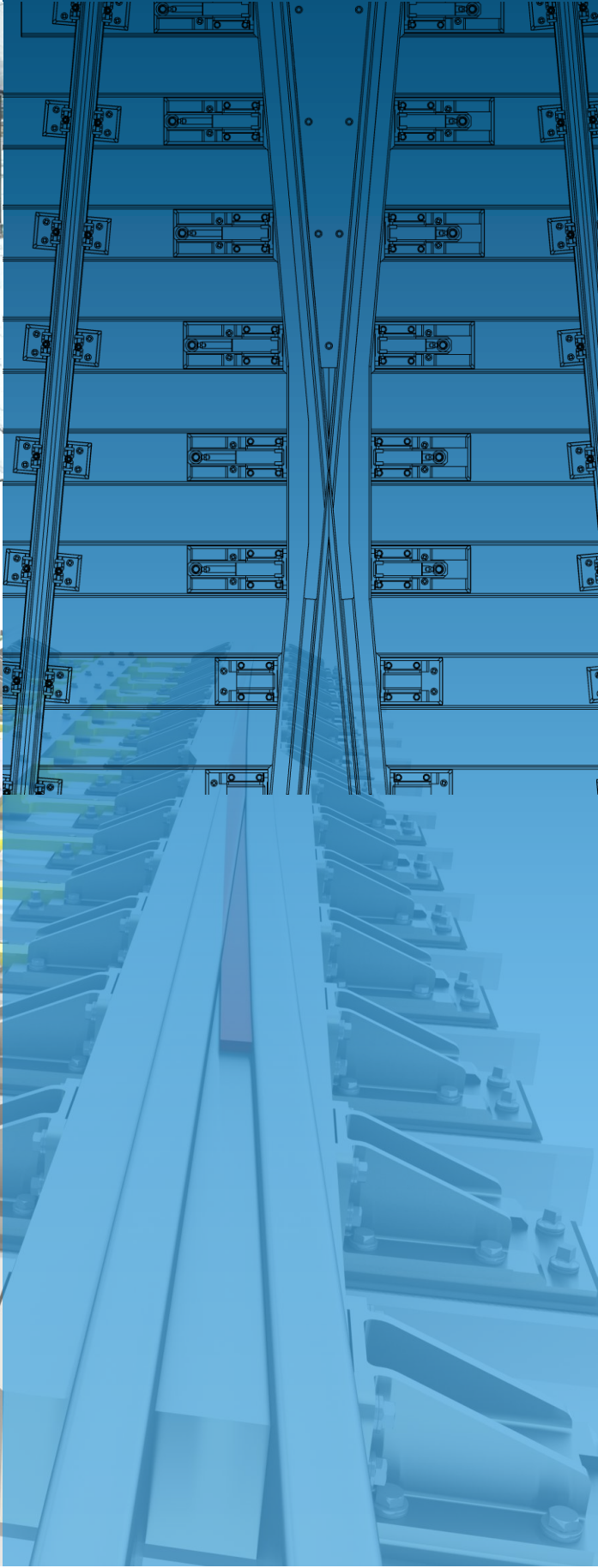


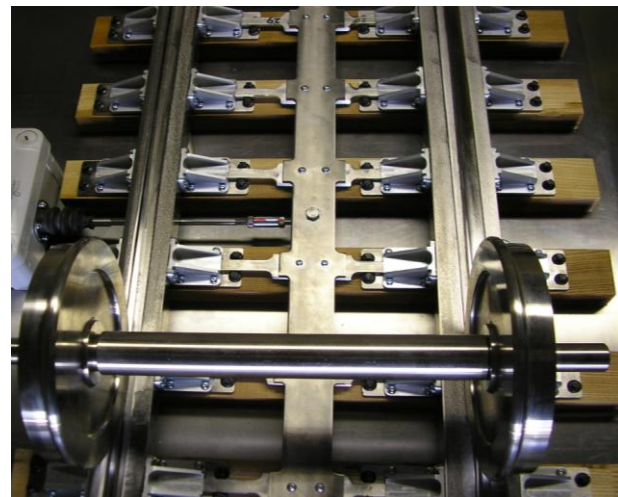
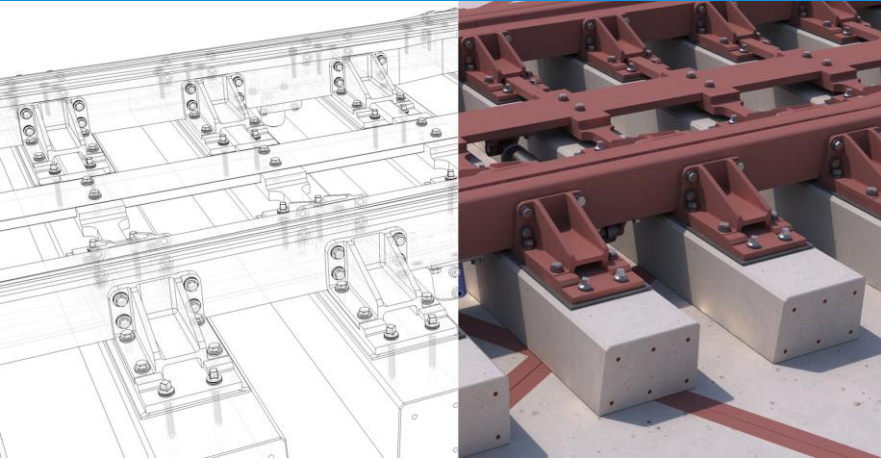
WIRAS®
WINTERPROOF - WITHOUT POINTHEATING

The Next Generation Turnout
Designed in The Netherlands



The WIRAS Winterproof Railway Turnout

The development of the WIRAS railway turnout has started in 2011. It is designed to meet the heavy requirements of today's rail infrastructure. Thanks to an entirely new and innovative mechanical setup, the WIRAS railway turnout and its movable frog is winterproof and needs no high energy consuming point heating system.



No CO₂ Emission

During winter periods point heaters of conventional railway turnouts need a huge amount of electrical energy. The required power per conventional turnout is 15kW or higher ! A conventional turnout consumes 400kWh energy each day again. This results in a production of 280kg CO₂ each day for each conventional turnout. The costs for electricity is 76 Euro for each conventional turnout each day. Also the costs for manufacturing, purchasing, installing, inspection, monitoring, repairing, modifying and replacing of point heating systems needed for conventional turnouts are very high.

The new innovative and game-changing WIRAS winterproof railway turnout is not fitted with horizontal moving points. Because of that, a point heating system is not needed at all, and for that reason it does not have the disadvantages conventional railway turnouts have.

