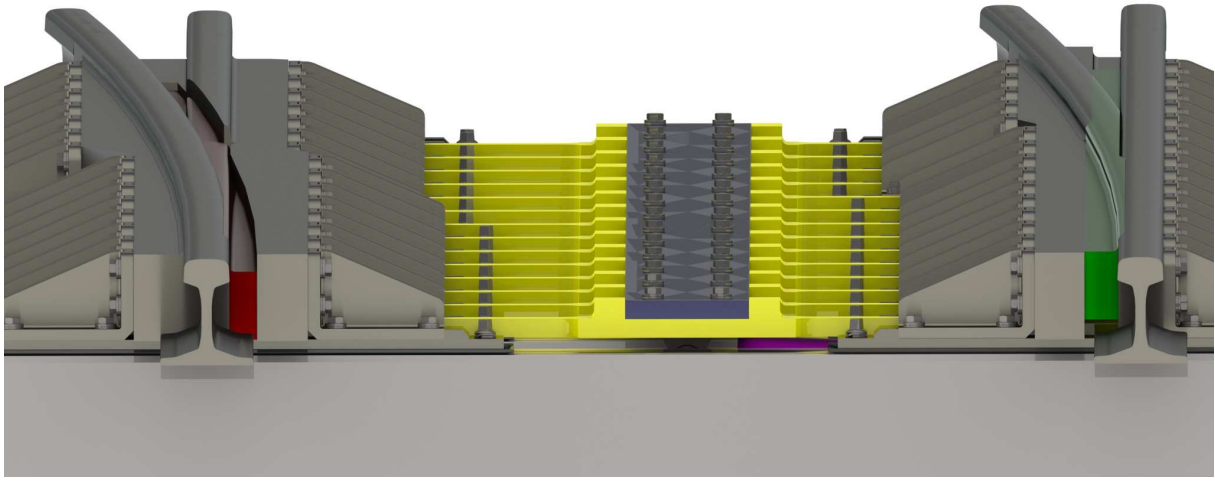
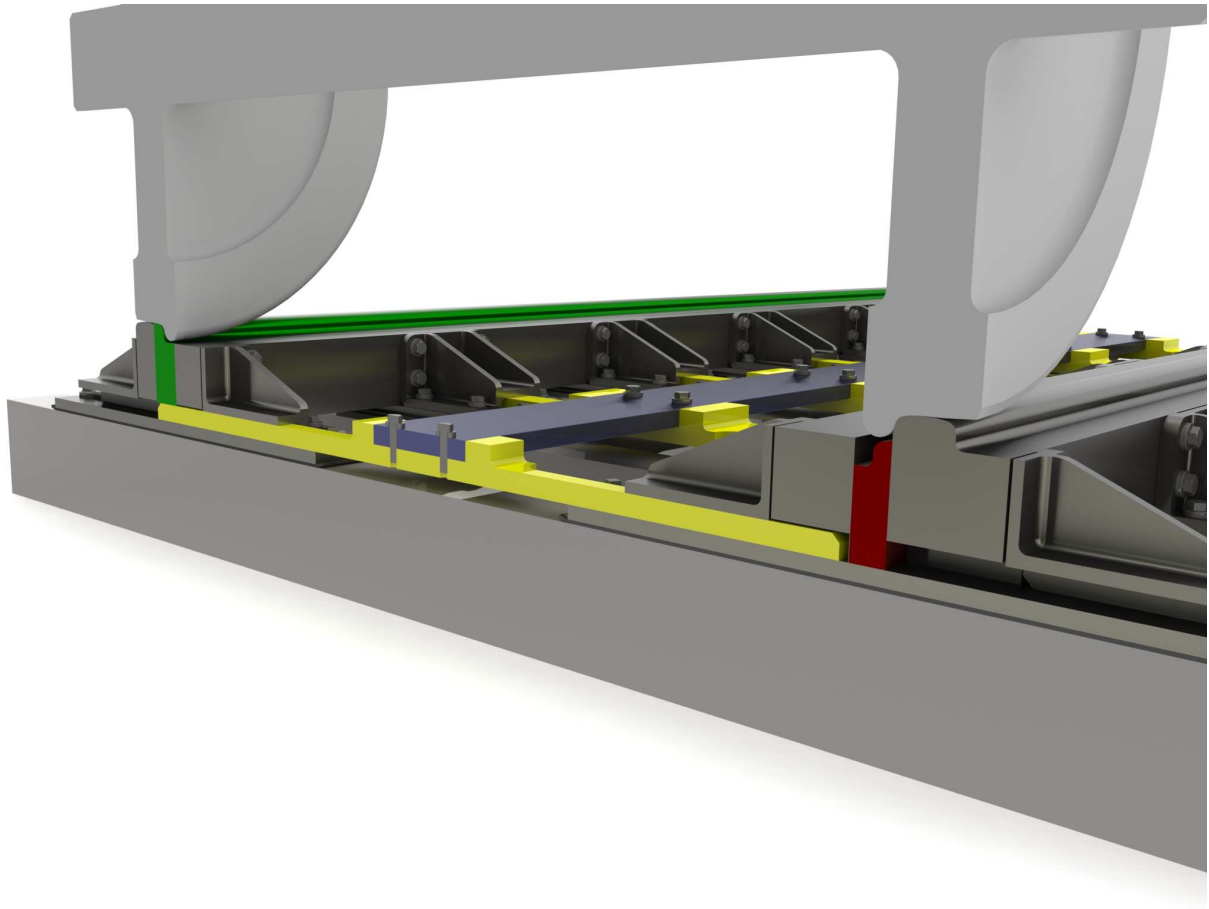




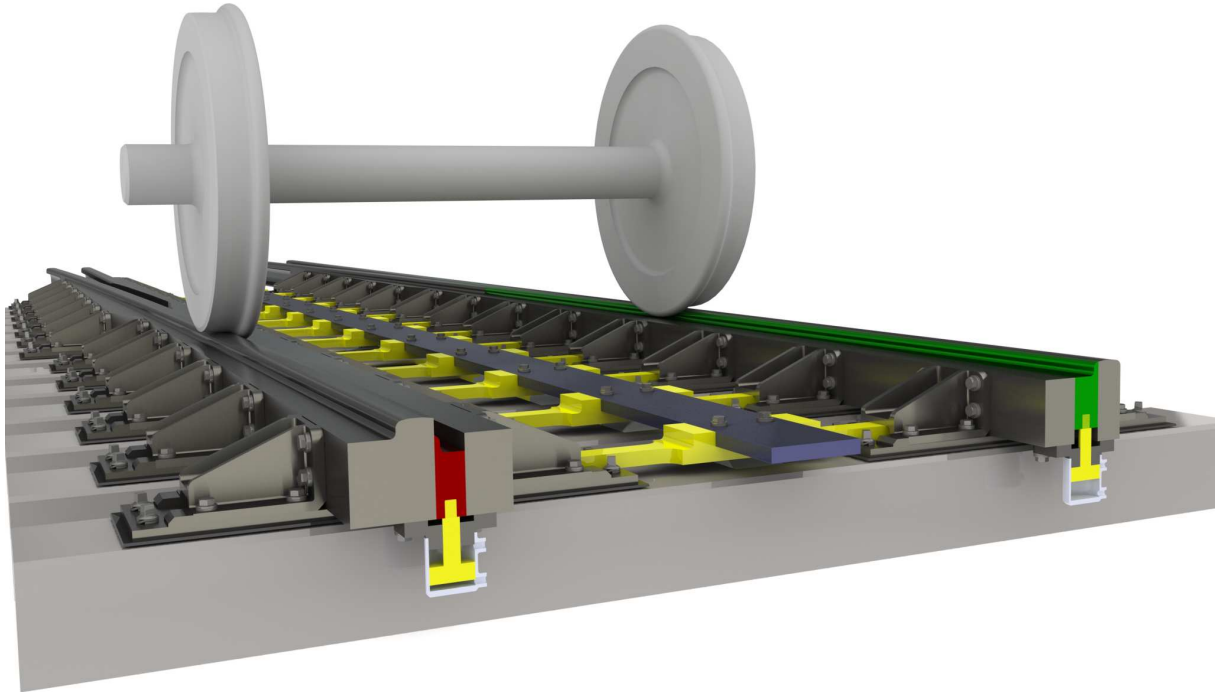
Functional description Winterproof Railway Turnout Version 2.0 (WRT 2.0)



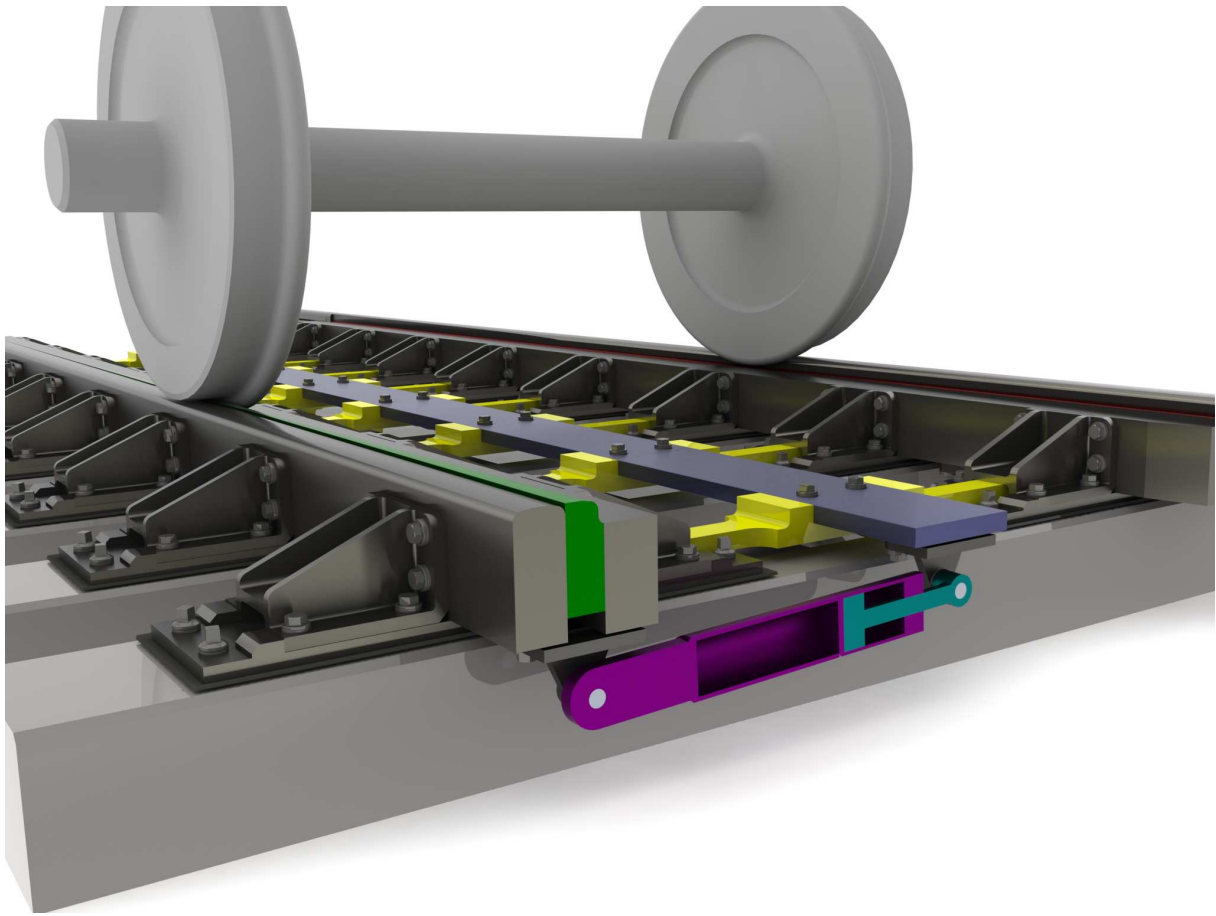
1. Startposition. Red switch-point low, Green switch-point high, and mechanically supported (locked) by the yellow lock-bars which are pushed to the right under the high switch-point (green). Train goes to the left.



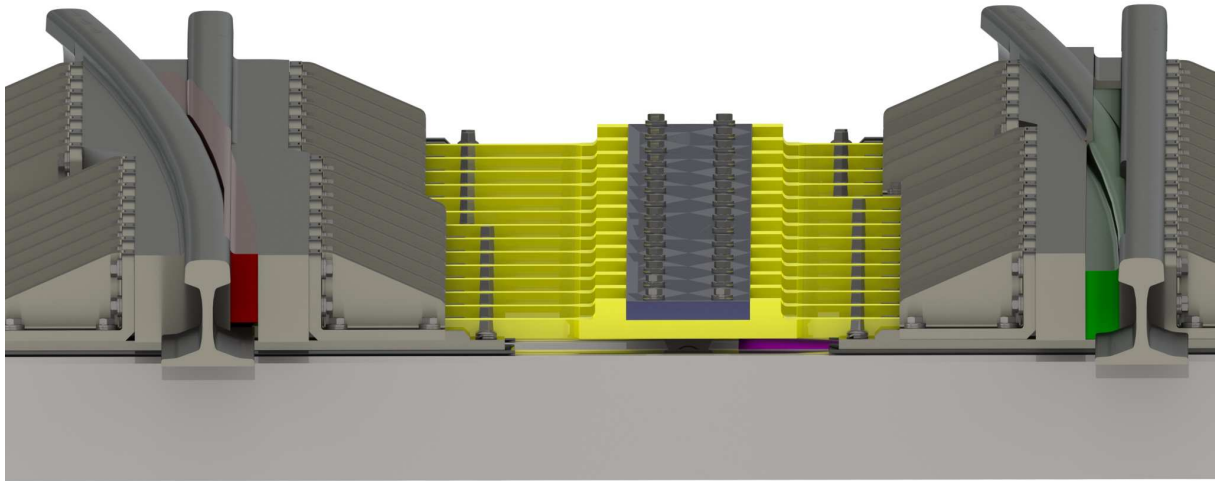
1a. *Startposition. Red switch-point low, Green switch-point high, and mechanically supported and locked by the yellow lock-bars. The yellow lock-bar itself is locked against moving by the lower red switch-point.*



2. *When the red switch-point (now low) will be lifted by the hydraulic actuators connected to the red switch point , the yellow lock-bar is unlocked and can be pushed under the red switch point to support (lock) it. When the yellow lock-bar is pushed under the red switch-point, the green switch-point (now high) is no longer supported (locked) by the yellow lock-bar. Now the way is free to pull the green switch-point down by the hydraulic actuators connected to the green switch-point. Simultaneously the green switch-point will lock-up the yellow lock-bar. Now the yellow lock-bar is locked again against moving horizontally.*



3. All lock-bars (yellow) are connected to each other by a strip (blue/gray). The strip (blue/gray) is connected to 3 hydraulic actuators (purple). So all lock-bars (yellow) can be moved horizontally simultaneously by 3 hydraulic actuators (purple).



4. *Endposition. Green switch-point low, Red switch-point high, and mechanically supported (locked) by the yellow lock-bars which are pushed to the left under the high switch-point (red). Train goes straight forward.*